

Lund, January 15, 2015

## Axis announces first temperature alarm cameras for remote monitoring of critical equipment

**The outdoor-ready, bullet-style AXIS Q29 Series are Axis' first temperature alarm cameras designed for remote monitoring of critical equipment, such as bulk storage sites, electrical sub stations or coal piles.**

Axis Communications, the market leader in network video, introduces a new series of network cameras with remote temperature monitoring capabilities, AXIS Q29 Temperature Alarm Camera Series. With two available lens alternatives and a resolution of 336x256, the cameras allow remote monitoring of critical temperatures at both short and long distances.

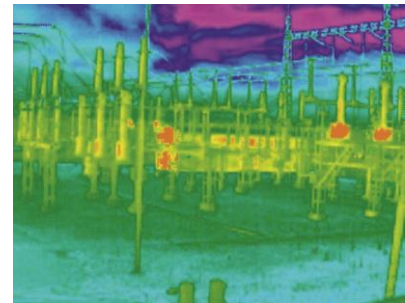
“Since the launch of Axis' first thermal security camera, we have had customers requesting network cameras that are also able to indicate the temperature of objects. The main application area for these cameras is to detect intruders, but also to remotely monitor critical equipment, server rooms or storage sites,” says Erik Frännlid, Axis' Director of Product Management. “AXIS Q2901-E Temperature Alarm Cameras can be used to monitor equipment's temperature on a 24/7 basis to eliminate risks of overheating.”

With AXIS Q2901-E and AXIS Q2901-E PT Mount it is possible to set up multiple alarm zones, which send an alarm when the temperature reaches above or below a pre-configured threshold. To make it easy for the operator, the cameras provide visual aids, such as isothermal palettes and spot temperature capabilities, to fast predict failures by indicating problem areas before the issue becomes visible to the eye or before machinery stops working.

Thanks to features like one-cable installation and support for Power over Ethernet (IEEE 802.3af), AXIS Q29 Series is easy to install and can easily be integrated with existing security systems. AXIS Q2901-E PT Mount is an alternative model coming with support for RS485/RS422 serial port, which allows the camera to be easily mounted on a PT motor-head. The pan/tilt support enables a large area to be scanned for critical temperatures.

AXIS Q2901-E offers a wall bracket for installation on walls or ceiling. The latter camera also supports Axis' Corridor Format, allowing the camera to deliver a vertical field of view, suitable to monitor server rooms or areas between piles or antennas. Axis temperature alarm cameras are mainly used for remote temperature monitoring with the possibility to set temperature alarms, but can also be used for detection, such as perimeter protection. AXIS Q29 Series can withstand harsh weather conditions and the casing offers protection from impact and vandal acts.

AXIS Q2901-E/Q2901-E PT Mount cameras are supported by the industry's largest base of video management software through the [Axis Application Development Partner Program](#), and [AXIS Camera Station](#). The cameras include support for [AXIS Camera Companion](#), [AXIS Camera Application Platform](#), [AXIS Video Hosting System](#) and [ONVIF](#) for easy camera system integration and for application developers to provide the camera with intelligent capabilities.



*Axis' new network cameras with remote temperature monitoring capabilities, AXIS Q29 Series, indicate the temperature of objects to eliminate risks of overheating.*



Axis temperature alarm cameras are planned to be available in Q1 2015 through Axis distribution channels.

For photos and other resources, please visit:

[www.axis.com/corporate/press/press\\_material.htm?key=q2901e](http://www.axis.com/corporate/press/press_material.htm?key=q2901e)  
[www.axis.com/corporate/press/press\\_material.htm?key=q2901e\\_ptmount](http://www.axis.com/corporate/press/press_material.htm?key=q2901e_ptmount)

For more information about thermal imaging and temperature alarm cameras, please see the White paper [Remote temperature monitoring](#).

***For further information about Axis Communications, please contact:***

*Lena Hedén, PR Marketing Manager, Axis Communications*

*Phone: + 46 46 272 1800, E-mail: [pressoffice@axis.com](mailto:pressoffice@axis.com)*

***About Axis***

*Axis offers intelligent security solutions that enable a smarter, safer world. As the global market leader in network video, Axis is driving the industry by continually launching innovative network products based on an open platform - delivering high value to its customers and carried through a global partner network. Axis has long-term relationships with partners and provides them with knowledge and ground-breaking network products in existing and new markets.*

*Axis has more than 1,800 dedicated employees in more than 40 countries around the world, supported by a network of over 70,000 partners across 179 countries. Founded in 1984, Axis is a Sweden-based company listed on NASDAQ Stockholm under the ticker AXIS. For more information about Axis, please visit our website [www.axis.com](http://www.axis.com)*